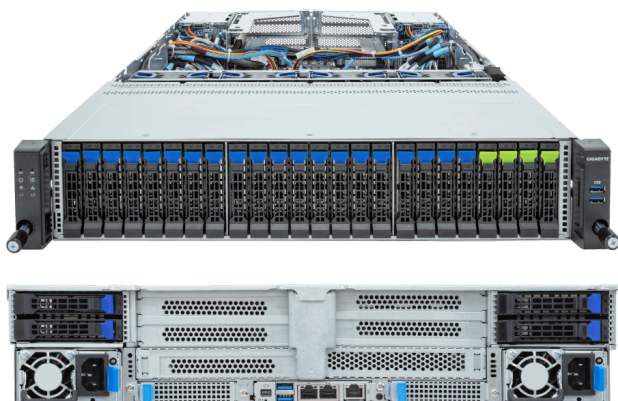
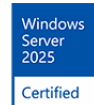
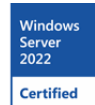


R283-Z96-AAJ2 (Rev. 1.x)

Rack Server - AMD EPYC™ 9004 Server Processors -
2U DP 24+4-Bay Gen5 NVMe/SATA/SAS-4 with expander



Key Features

- Dual AMD EPYC™ 9004 Server Processors
- 12-Channel DDR5 RDIMM per CPU with 24 x DIMMs
- 2 x 1 Gb/s LAN ports via Intel® I350-AM2
- 4 x 2.5" Gen5 NVMe/SATA/SAS-4 hot-swap bays
- 20 x 2.5" SATA/SAS-4 hot-swap bays
- 4 x 2.5" SATA/SAS-4 hot-swap bays on the rear side
- Onboard 24 Gb/s SAS-4 expander
- 3 x M.2 slots with PCIe Gen3 x4 and x2
- 4 x FHHL PCIe x16 slots with Gen5 x16 lanes
- 2 x OCP NIC 3.0 PCIe Gen5 x16 slots
- 1+1 2000 W 80 PLUS Titanium redundant power supplies

Applications

Networks Server, Servers for Hybrid/Private Cloud...

Specification

Dimensions	2U (W438 x H87.5 x D815 mm)	PCIe Expansion Slots	4 x FHHL x16 (Gen5 x16) 2 x OCP NIC 3.0 (Gen5 x16), Support NCSI
Motherboard	MZ93-FS1	I/O Ports	Front: 2 x USB 3.2 Gen1 Rear: 2 x USB 3.2 Gen1, 1 x Mini-DP, 2 x RJ45, 1 x MLAN
CPU	AMD EPYC™ 9005 Server Processors AMD EPYC™ 9004 Server Processors Dual processors, cTDP up to 300 W - EPYC 9654 cTDP up to 400 W	Backplane Board	Front - CBP2081: PCIe Gen5 x4 or SATA 6 Gb/s or SAS-4 24 Gb/s Front - CBP20G0: PCIe Gen5 x4 or SATA 6 Gb/s or SAS-4 24 Gb/s Rear - CBP2025: SATA 6 Gb/s or SAS-4 24 Gb/s
OS Compatibility	OS Support List	TPM	1 x TPM header (SPI), Optional TPM 2.0 kit: CTM010
Socket	2 x LGA 6096 (Socket SP5)	Power Supply	1+1 2000 W 80 PLUS Titanium redundant power supplies AC Input: 100-240 V
Chipset	System on Chip	System Management	ASPEED® AST2600 Baseboard Management Controller GIGABYTE Management Console web interface
Memory	12-Channel DDR5 RDIMM, 24 x DIMMs Up to 4800 MT/s	System Fans	4 x 80x80x38mm
LAN	2 x 1 Gb/s LAN (1 x Intel® I350-AM2), Support NCSI 1 x 10/100/1000 Mb/s Management LAN	Operating Properties	Operating: 10°C to 35°C, 8% to 80% (non-condensing) Non-operating: -40°C to 60°C, 20% to 95% (non-condensing)
Video	Integrated in ASPEED® AST2600 - 1 x Mini-DP	Packaging Content	1 x R283-Z96-AAJ2 2 x CPU heatsinks 1 x Mini-DP to D-Sub cable 1 x 2-Section Rail kit
Storage	Front hot-swap: 4 x 2.5" Gen5 NVMe/SATA/SAS-4 [1] 20 x 2.5" SATA/SAS-4 [1] Rear hot-swap: 4 x 2.5" SATA/SAS-4 [1] Internal M.2: 2 x M.2 (2280/22110), PCIe Gen3 x4 1 x M.2 (2280/22110), PCIe Gen3 x2	Ordering Part Numbers	6NR283Z96DR000ABJ2*
	[1] Storage card is required to enable SATA and SAS drives. - Broadcom SAS4x48 expander - Bandwidth: SATA 6 Gb/s or SAS-4 24 Gb/s per port	Optional Parts	- 3-Section Rail kit (Supports CMA): 25HB2-A56121-K0R - Cable Management Arm: 25HB1-R18300-K0R
RAID	Require RAID add-in cards		



Learn more at: <https://www.gigabyte.com/Enterprise>

* All specifications are subject to change without notice. Please visit our website for the latest information.

* All trademarks and logos are the properties of their respective holders.

© 2026 Giga Computing Technology Co., Ltd. All rights reserved.

Last updated: Jun 25, 2026

Designed by

